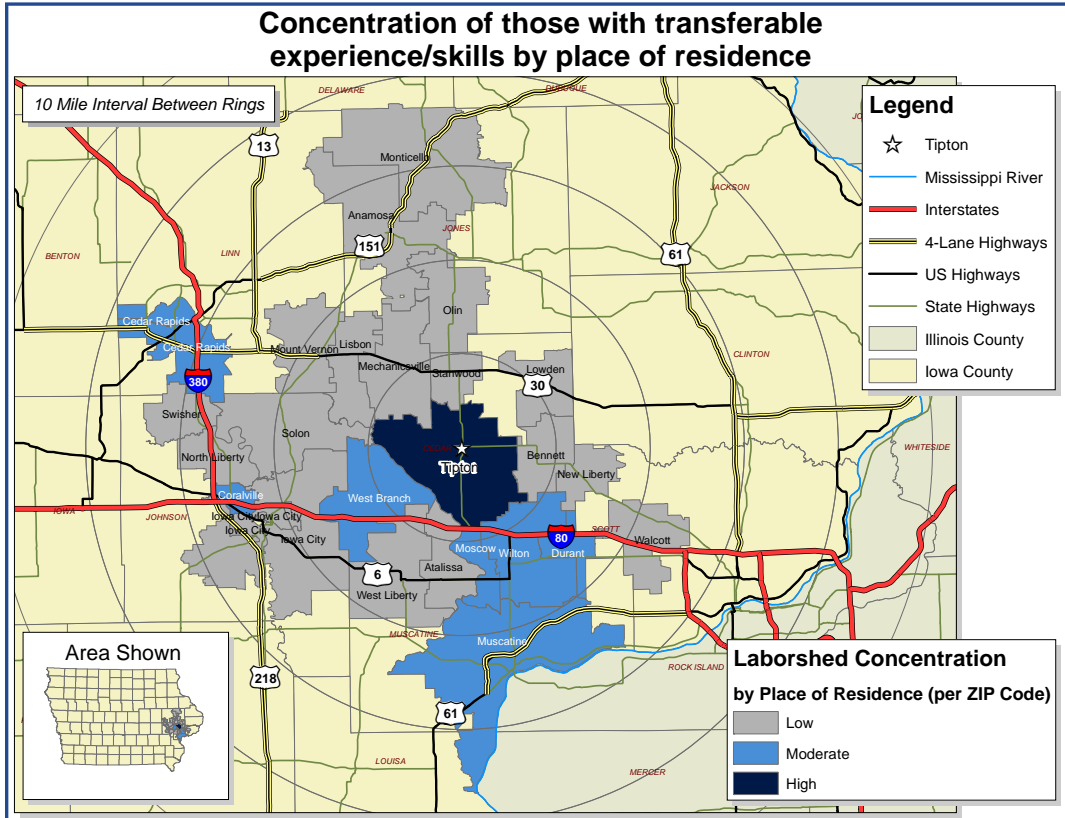


Labor Characteristics

Advanced Manufacturing

Cedar County, IA Laborshed Area



Estimated Potential Available Labor Per Occupational Category:

Business Operations:

- Managers - 12,617
- Accountants & Auditors - 2,601
- Clerks - 2,601
- Customer Service Reps - 1,474
- Market Research Analysts - 385
- Office & Administrative Support Workers, All Other - 1,119
- Sales Reps - 395
- Secretaries - 3,685

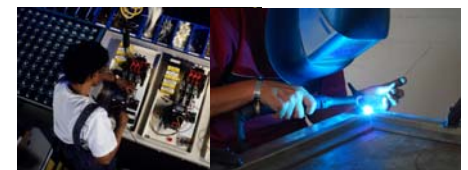
Production:

- Managers - 390
- Supervisors - 1,864
- Assemblers & Fabricators - 2,601
- Electrical & Electronic Engineering Techs - 400
- Electricians - 392
- Engineering Techs, All Other - 380
- Engineers - 1,127
- Industrial Machinery Mechanics - 382
- Maintenance & Repair Workers, General - 735
- Multiple Machine Operators - 737
- Numerical Tool & Process Control Programmers - 393
- Painters, Construction & Maintenance - 396
- Production Workers, All Other - 5,203
- Weighers & Measurers - 398
- Welding Machine Operators - 1,125

Material Moving:

- Forklift Operators - 734
- Heavy Truck Drivers - 739
- Laborers & Material Movers, Hand - 398
- Light Truck Drivers - 391

An estimated total of 43,662 people in the Laborshed area



Underemployment:

Total Underemployment - 3.4%

- Low hours - 0.9%
- Mismatch of skills - 1.7%
- Low income - 0.9%

IWD only counts individuals once when estimating Total Underemployment.

City of Tipton
407 Lynn St.
Tipton, IA 52772
Phone: (563) 886-6187
Email: cnosbisch@tiptoniowa.org
www.tiptoniowa.org

Workers who have transferable experience/skills in the industry are currently commuting an average of 13 miles one way for work. Those who are willing to change/accept employment are willing to commute an average of 26 miles one way for the right employment opportunity.

Employment Status:

81.2% Employed

- 13.7% of the employed are willing to change employment

6.0% Unemployed

- 57.1% of the unemployed are willing to accept employment

3.4% Voluntarily Not Employed, Not Retired

9.4% Retired

Education Levels:

- 60.7% Education beyond high school
- 6.0% Trade certified
- 1.7% Vocational training
- 14.5% Associate degree
- 18.0% Undergraduate degree
- 3.4% Postgraduate/professional degree

Workplace Flexibility:

(by percent of interest)

- Cross-training - 76.2%
- Job teams - 71.4%
- Varied shifts (2nd, 3rd, & split) - 54.5%
- Job sharing - 47.6%
- Temporary work - 54.5%
- Seasonal work - 50.0%

Other Facts:

- 60.9% paid an hourly wage
- 70.9% are/were employed full-time
- 18.8% are/were self-employed
- 8.5% are/were employed part-time
- 9.5% hold two or more jobs
- Currently working an average of 44 hrs/week

Current Benefits:

- Health/medical insurance - 89.9%
- Pension/retirement/401K - 64.6%
- Dental coverage - 54.4%
- Paid vacation - 54.4%
- Vision coverage - 34.2%
- Paid holidays - 27.8%
- Paid sick leave - 26.6%
- Life insurance - 25.3%
- Disability Insurance - 15.2%

Desired Benefits:

(by percent of interest)

- Health/medical insurance - 90.5%
- Dental coverage - 57.1%
- Paid vacation - 57.1%
- Pension/retirement/401K - 47.6%
- Vision coverage - 38.1%
- Paid holidays - 33.3%
- Paid sick leave - 28.6%
- Life insurance - 4.8%
- Paid time off - 4.8%

Top Advertising Media:

(for those seeking employment opportunities)

- Internet - 59.6%
 - www.corridorcareers.com
 - www.monster.com
 - www.iowajobs.org
- Local/Regional Newspapers - 42.3%
 - The Gazette - Cedar Rapids
 - Quad City Times
- Local IowaWORKS Centers - 17.3%
- Networking through friends, family or acquaintances - 17.3%

Occupation	Occupational Code	Mean Wage	Entry Wage	Experienced Wage	Median Wage
Accountants and Auditors	13-2011	\$ 28.12	\$ 19.52	\$ 32.41	\$ 26.79
Assemblers and Fabricators, All Other	51-2099	\$ 13.66	\$ 9.52	\$ 15.72	\$ 13.44
Bookkeeping, Accounting, and Auditing Clerks	43-3031	\$ 16.40	\$ 11.57	\$ 18.81	\$ 15.93
Computer-Controlled Machine Tool Operators, Metal and Plastic	51-4011	\$ 18.95	\$ 14.57	\$ 21.14	\$ 19.32
Crushing, Grinding, and Polishing Machine Setters, Operators, and Tenders	51-9021	\$ 15.44	\$ 12.08	\$ 17.12	\$ 13.97
Customer Service Representatives	43-4051	\$ 14.86	\$ 9.65	\$ 17.48	\$ 14.41
Cutting, Punching, and Press Machine Setters, Operators, and Tenders, Metal and Plastic	51-4031	\$ 16.26	\$ 12.83	\$ 17.98	\$ 16.27
Drilling and Boring Machine Tool Setters, Operators, and Tenders, Metal and Plastic	51-4032	\$ 15.51	\$ 11.22	\$ 17.66	\$ 15.17
Electrical and Electronic Engineering Technicians	17-3023	\$ 21.86	\$ 16.13	\$ 24.72	\$ 20.99
Electricians	47-2111	\$ 25.92	\$ 17.51	\$ 30.13	\$ 27.23
Electromechanical Equipment Assemblers	51-2023	\$ 14.58	\$ 12.28	\$ 15.73	\$ 13.94
Engineering Technicians, Except Drafters, All Other	17-3029	\$ 24.71	\$ 19.14	\$ 27.49	\$ 24.66
Engineers, All Other	17-2199	\$ 33.33	\$ 22.38	\$ 38.81	\$ 32.23
Executive Secretaries and Administrative Assistants	43-6011	\$ 19.92	\$ 14.62	\$ 22.58	\$ 19.51
Financial Managers	11-3031	\$ 51.79	\$ 30.92	\$ 62.24	\$ 46.40
First-Line Supervisors/Managers of Helpers, Laborers, and Material Movers, Hand	53-1021	\$ 21.49	\$ 15.25	\$ 24.60	\$ 21.36
First-Line Supervisors/Managers of Production and Operating Workers	51-1011	\$ 27.65	\$ 19.69	\$ 31.64	\$ 27.11
First-Line Supervisors/Managers of Transportation and Material-Moving Machine and Vehicle Operators	53-1031	\$ 23.57	\$ 15.82	\$ 27.44	\$ 21.77
General and Operations Managers	11-1021	\$ 48.85	\$ 26.64	\$ 59.96	\$ 42.79
Helpers--Production Workers	51-9198	\$ 10.37	\$ 8.08	\$ 11.51	\$ 9.15
Industrial Engineering Technicians	17-3026	\$ 23.55	\$ 16.55	\$ 27.06	\$ 22.08
Industrial Engineers	17-2112	\$ 33.78	\$ 25.59	\$ 37.89	\$ 33.39
Industrial Machinery Mechanics	49-9041	\$ 22.50	\$ 15.17	\$ 26.16	\$ 21.77
Industrial Production Managers	11-3051	\$ 51.60	\$ 31.15	\$ 61.82	\$ 45.82
Industrial Truck and Tractor Operators	53-7051	\$ 15.32	\$ 11.72	\$ 17.13	\$ 14.92
Laborers and Freight, Stock, and Material Movers, Hand	53-7062	\$ 13.56	\$ 9.19	\$ 15.75	\$ 12.66
Lathe and Turning Machine Tool Setters, Operators, and Tenders, Metal and Plastic	51-4034	\$ 19.63	\$ 16.21	\$ 21.35	\$ 20.16
Machinists	51-4041	\$ 18.92	\$ 14.23	\$ 21.27	\$ 19.66
Maintenance and Repair Workers, General	49-9071	\$ 18.74	\$ 11.53	\$ 22.35	\$ 17.81
Mechanical Engineering Technicians	17-3027	\$ 26.90	\$ 19.96	\$ 30.37	\$ 27.71
Mechanical Engineers	17-2141	\$ 37.29	\$ 26.35	\$ 42.76	\$ 36.52
Milling and Planing Machine Setters, Operators, and Tenders, Metal and Plastic	51-4035	\$ 18.87	\$ 14.19	\$ 21.22	\$ 19.86
Molding, Coremaking, and Casting Machine Setters, Operators, and Tenders, Metal and Plastic	51-4072	\$ 14.59	\$ 11.02	\$ 16.37	\$ 13.87
Multiple Machine Tool Setters, Operators, and Tenders, Metal and Plastic	51-4081	\$ 16.11	\$ 10.86	\$ 18.74	\$ 14.34
Numerical Tool and Process Control Programmers	51-4012	\$ 22.69	\$ 17.74	\$ 25.17	\$ 23.76
Office and Administrative Support Workers, All Other	43-9199	\$ 11.15	\$ 8.23	\$ 12.61	\$ 10.26
Painters, Construction and Maintenance	47-2141	\$ 18.23	\$ 12.82	\$ 20.93	\$ 18.53
Production Workers, All Other	51-9199	\$ 12.20	\$ 8.44	\$ 14.08	\$ 11.06
Sales Representatives, Services, All Other	41-3099	\$ 27.15	\$ 14.90	\$ 33.29	\$ 22.51
Secretaries, Except Legal, Medical, and Executive	43-6014	\$ 15.69	\$ 10.42	\$ 18.31	\$ 14.88
Shipping, Receiving, and Traffic Clerks	43-5071	\$ 15.11	\$ 11.30	\$ 17.02	\$ 14.73
Stationary Engineers and Boiler Operators	51-8021	\$ 21.68	\$ 17.76	\$ 23.65	\$ 21.37
Team Assemblers	51-2092	\$ 15.78	\$ 10.88	\$ 18.23	\$ 15.70
Transportation, Storage, and Distribution Managers	11-3071	\$ 39.54	\$ 26.00	\$ 46.32	\$ 35.79
Truck Drivers, Heavy and Tractor-Trailer	53-3032	\$ 18.03	\$ 14.14	\$ 19.97	\$ 17.55
Truck Drivers, Light or Delivery Services	53-3033	\$ 13.87	\$ 9.24	\$ 16.20	\$ 13.06
Water and Liquid Waste Treatment Plant and System Operators	51-8031	\$ 19.46	\$ 11.06	\$ 23.67	\$ 20.02
Weighers, Measurers, Checkers, and Samplers, Recordkeeping	43-5111	\$ 13.21	\$ 10.54	\$ 14.55	\$ 12.17
Welders, Cutters, Solderers, and Brazers	51-4121	\$ 16.34	\$ 13.18	\$ 17.91	\$ 16.22
Welding, Soldering, and Brazing Machine Setters, Operators, and Tenders	51-4122	\$ 17.32	\$ 14.63	\$ 18.67	\$ 17.34

The 2012 Iowa Wage data for the Cedar County Laborshed was produced by the Labor Force & Occupational Analysis Bureau to provide communities local information on wages by occupation. This publication was developed specifically for the Cedar County Laborshed area. The source of the wage and employment data is based on the May 2011 OES estimates. Additional occupational wage and employment data can be found at <http://iwin.iwd.state.ia.us/iowa/OlmisZine>.